



# POTIS

## **Conversion Instructions for the Potis Gyros Grill**

**Conversions may only be performed by a qualified gas technician.**

1. Shut-off valve to gas line or bottle is to be closed and the appliance is to be disconnected from the gas supply.
2. Loosen the screws securing the appliance's back panel and remove panel.
3. Remove the internal gas line between the appliance's burners and gas valve.
4. Remove the main nozzle from the burner connector piece and install new nozzle.
5. Reinstall the appliance's internal gas line, and test for gas leaks.
6. Replace limiting nozzles (above the adjustment knobs).
7. Reinstall the appliance's back panel.
8. Change the tag indicating model specifications!
9. Reconnect the appliance to the gas supply, check the connection at appliance end for leaks.
10. Test appliance for proper function.

Valid as from 01.05.2002

### Nozzle table for gas grills of the series

<b>G1</b>	<b>G2</b>	<b>G3</b>		
capacity per burner	1,75 kW			
<b>LPG category</b>	<b>'3B/P</b>	<b>50 mbar</b>	<b>'3+</b>	<b>50/67 mbar</b>
main nozzle	0,59	reduction nozzle		0,48
<b>LPG category</b>	<b>'3B/P</b>	<b>30 mbar</b>	<b>'3+</b>	<b>30/37 mbar</b>
main nozzle	0,65	reduction nozzle		0,57
<b>natural gas category</b>	<b>'2LL</b>	<b>20 mbar</b>		
main nozzle	1,15	reduction nozzle		0,75
<b>natural gas category</b>	<b>'2H &amp; I2E</b>	<b>20 mbar</b>	<b>'2E+</b>	<b>20/25mbar</b>
	<b>'2L</b>	<b>25 mbar</b>		
main nozzle	1,0	reduction nozzle		0,75

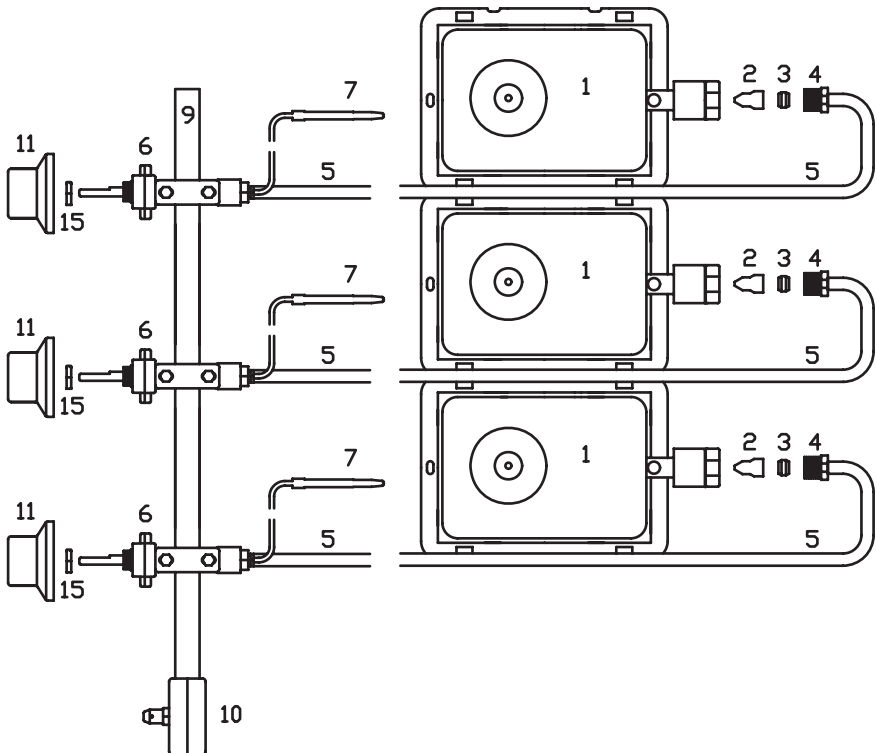
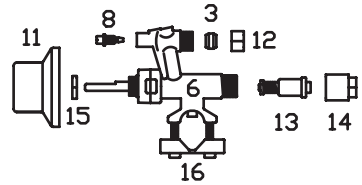
### Nozzle table for gas grills of the series

<b>GD1-S</b>	<b>GD2-S</b>	<b>GD3-S</b>	<b>GD4-S</b>	<b>GD5-S</b>
capacity per burner	3,5 kW			
<b>LPG category</b>	<b>'3B/P</b>	<b>50 mbar</b>	<b>'3+</b>	<b>50/67 mbar</b>
main nozzle	0,81	reduction nozzle		0,65
<b>LPG category</b>	<b>'3B/P</b>	<b>30 mbar</b>	<b>3+</b>	<b>30/37 mbar</b>
main nozzle	0,88	reduction nozzle		0,75
<b>natural gas category</b>	<b>'2LL</b>	<b>20 mbar</b>		
main nozzle	1,53	reduction nozzle		1,0
<b>natural gas category</b>	<b>'2H &amp; I2E</b>	<b>20 mbar</b>	<b>'E+</b>	<b>20/25mbar</b>
	<b>'2L</b>	<b>25 mbar</b>		
main nozzle	1,45	reduction nozzle		1,0

### Nozzle table for gas grills of the series

<b>GD1</b>	<b>GD2</b>	<b>GD3</b>	<b>GD4</b>	<b>GD5</b>
capacity per burner	2,8 kW			
<b>LPG category</b>	<b>'3B/P</b>	<b>50 mbar</b>	<b>'3+</b>	<b>50/67 mbar</b>
main nozzle	0,75	reduction nozzle		0,65
<b>LPG category</b>	<b>'3B/P</b>	<b>30 mbar</b>	<b>'3+</b>	<b>30/37 mbar</b>
main nozzle	0,85	reduction nozzle		0,75
<b>natural gas category</b>	<b>'2LL</b>	<b>20 mbar</b>		
main nozzle	1,45	reduction nozzle		1,0
<b>natural gas category</b>	<b>'2H &amp; '2E</b>	<b>20 mbar</b>	<b>'2E+</b>	<b>20/25mbar</b>
	<b>'2L</b>	<b>25 mbar</b>		
main nozzle	1,30	reduction nozzle		1,0

- 1 Burner
- 2 Main nozzle
- 3 Dual-taper
- 4 Male pipe fitting
- 5 Internal gas line
- 6 Appliance gas valve
- 7 Thermoelectric cell
- 8 Limiting nozzle
- 9 Gas distributor pipe 16x1,5
- 10 ½" gas connection with test-nipple
- 11 Knob
- 12 ST nut M12x1
- 13 Magnetic coil
- 14 Aluminium union nut
- 15 MS nut M12x1
- 16 Fixing attachment with screw M4x25



**WWW.POTIS.DE**

August-Spindler-Strasse 4                      D-37079 Göttingen  
Telefon: ++ 49 (0) 551 506890    fax: ++ 49 (0) 551 50689-50